

# Otolift Sapphire Stairlift

All-round comfort




# The Sapphire Stairlift

**The Otolift Sapphire Stairlift has been specially developed to be positioned along the steep inner curve, or spiral, of the stairway. It runs along two slim tubes. This double track system is your 100% guarantee of a stable and safe ride. That's very reassuring in a lift that can negotiate a gradient of up to seventy degrees!**

The Sapphire Stairlift is distinguished by its functional, ergonomic design. The lift has been specially designed to be mounted along the inner side of the stairway, so that on stairs with a sharp curve, the broader outer curve remains negotiable. The stairlift's slim track takes up minimal space, so that the stairs remain optimally accessible for the other stair users. In many cases, the running track can also serve as an extra handrail. The existing handrail is retained in most situations.

The Sapphire  
stairlift gives you  
renewed freedom



Discovering that you can no longer do certain things that you used to do without thinking is concerning. You have to learn to cope with your limitations and accept that you can no longer do everything under your own steam. You have to think of possibilities and solutions. With the Jade Chairlift from Otolift, you will be able to continue living in your familiar surroundings and recover part of your lost freedom and independence.

## STABLE, COMFORTABLE RIDE QUALITY

The Sapphire stairlift runs on a slim, double track. This ensures stable, quiet movement. The system with the double running track guarantees 100% stability – the stairlift simply cannot topple. This adds to the user's feeling of security: the Sapphire provides pleasant and stable transport, without any annoying rocking or vibration. The ascending and descending speed is smooth and even. Considering that the Sapphire negotiates an impressive gradient of up to 70 degrees, the stability of the reliable, robust construction is a unique and widely appreciated feature of this model

## SAFE AND RELIABLE

Safety, comfort, functionality and reliability are the foremost aspects of the design. The comfortable seat and back support ensure that you sit securely and at ease. The Sapphire stairlift has many safety features, such as a safety belt. The running track with two tubes is a preventive system that stops the chair from toppling. This is not only safe, but also reliable – the Sapphire has no complicated and vulnerable components for stabilising the chair: an engine to power it is enough.

## USER-FRIENDLY

Operation of the Sapphire excels in simplicity. It comes with remote control as standard for summoning and sending the lift, with no cables necessary. The compact chair provides optimum comfort: all the elements are foldaway, such as the footrest, armrest and seat. When not in use, the stairlift takes up a minimum of space. You set the lift in motion using the yellow operating ball on top of the armrest. The unique ball shape enables anyone to operate the lift easily and without effort. A 'soft' start and stop contributes to the comfort of the ride – the lift starts and stops shock-free. Thanks to a continuous transmission between the various speeds, the ride quality up and down is smooth. On arriving at your destination, you can simply give the chair a quarter turn, thus forming a barrier across the stairwell and allowing you to step off safely and easily.



↑ The least resistance will stop the stairlift immediately.



↑ The comfortable chair ensures that you travel between the two floors safely and relaxed. You set the stairlift in motion using the yellow ball on top of the armrest.



↑ The chair comes with a safety belt as standard.







↑ The Sapphire Stairlift has been specially developed for positioning along the steep inner curve of the stair. Thanks to the slim running track, which is mounted along this inner curve, the stair remains accessible to visitors and other members of the household. The double track gives the lift 100% stability and the lift chair cannot topple.



↑ When not in use, the stairlift folds away very compactly, and the mechanism is discreetly concealed in the chair.



↑ Getting on and off at the top of the stairs is made safe by simply swivelling the seat a quarter turn.

## RELIABLE IN A POWER CUT

The Sapphire Stairlift is powered by two batteries that are automatically charged when the lift is parked on its usual spot. The charging takes place automatically via the two charging stations positioned on the track. This means you are not dependent on the electricity supply. In the event of a power cut, the stairlift will function undisturbed. You need never fear that you will get stuck halfway – you will still be able to go up or down several times if the electricity supply is disrupted for whatever reason.

## SIMPLE TO INSTALL

Installation is quick and easy. The lift is fastened securely on to your stairway. The Sapphire is supplied custom-made, and Otto Ooms offers optional extras for adapting the stairlift to your personal requirements or specific living circumstances. With custom solutions, such as an extra short offshoot or a special parking curve, additional space can be saved at the end of the stairway. This keeps the passageway as free as possible. For the lift chair, you have a choice of nine colours and two types of upholstery, and there is a choice of two colours for the lift paintwork.





# The Sapphire stairlift: powerful on steep, curving stairs

## TEN BENEFITS OF THE SAPPHIRE STAIRLIFT:

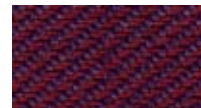
- 100% stability
- safe and comfortable
- reliable
- discreet design
- the stairway remains freely accessible
- wireless remote control
- soft start and stop
- reliable in a power cut
- easy to install on any type of stair
- very quiet

## TWELVE COVERINGS

The coverings of the seat and backrest are available in eight materials and four imitation leather choices.



Violet



Burgundy



Navy blue



Grey



Brown



Green



Red



Light brown



Hazelnut

*Imitation leather*



Burgundy

*Imitation leather*



Black

*Imitation leather*



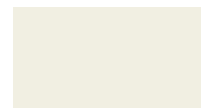
Midnight blue

*Imitation leather*

## TWO COLOURS OF PAINTWORK



RAL 7035



RAL 9001



## TECHNICAL SPECIFICATIONS

- Lifting capacity** 115 or 130 kg.
- Speed** Variable to max 0.15 m/sec  
With soft start and stop.
- Motor** 300 Watt.
- Electricity** 230 Volt 1 phase socket in the vicinity of the stair for the supply battery charger.
- Controls** On the chair in the left or right armrest.  
Call and send switch at top and foot of the stairs.
- Rail** Track provided with powder coating, mounted on the stair treads.
- Safety** Pressure-sensitive features under the footrest and chair, the side panels and driving mechanism.
- Extras** Key switches and various personalised adjustments.

## GUARANTEE AND SERVICING

The Otolift stairlifts are innovative quality products with a long lifecycle. Services and any repairs are carried out by our own maintenance team quickly and expertly. Our service department is open all year round, 7 days a week.

